

# FIELD REPLACEABLE UNIT DOCUMENTATION

## **Satellite™** **5200 Series**

---

### GENERAL INFORMATION

---

#### **Tools Required for Proper Disassembly and Reassembly:**

- 1. Phillips Screwdriver (Size 1)**
- 2. 3mm Flat head Screwdriver**
- 3. Case Separator**
- 4. ESD Wrist Strap**
- 5. ESD mats**
- 6. Tweezers**

Before attempting any of the following procedures, make sure that the main battery and AC adaptor is not connected to the unit and the environment in which you are working on is protected from Electro-Static Discharge(ESD).

# FIELD REPLACEABLE UNIT DOCUMENTATION

## **Satellite<sup>TM</sup>** **5200 Series**

---

### **TABLE OF CONTENTS:**

- 1. BATTERY PACK REMOVAL**
- 2. OPTIONAL PC CARD REMOVAL**
- 3. HDD REMOVAL**
- 4. MEMORY MODULE REMOVAL**
- 5. MINI PCI CARD REMOVAL**
- 6. MODEM BOARD REMOVAL**
- 7. KEYBOARD REMOVAL**
- 8. TOP COVER REMOVAL**
- 9. CD-R/W/DVD-ROM DRIVE REMOVAL**
- 10. SPEAKER(WOOFER) REMOVAL**
- 11. PC CARD SLOT REMOVAL**
- 12. SOUND BOARD REMOVAL**
- 13. RTC REMOVAL**
- 14. COOLING MODULE REMOVAL**
- 15. CPU REMOVAL**
- 16. TOSHIBA STYLE BAY REMOVAL**
- 17. USB BOARD REMOVAL**
- 18. SYSTEM BOARD REMOVAL**
- 19. SD CARD BOARD REMOVAL**
- 20. CPAD AND SUB LCD REMOVAL**
- 21. CD CONTROL/SUB LCD REMOVAL**
- 22. SWITCH BOARD REMOVAL**
- 23. SPEAKERS REMOVAL**
- 24. 15" DISPLAY MASK REMOVAL**
- 25. FL INVERTER AND 15" LCD REMOVAL**

---

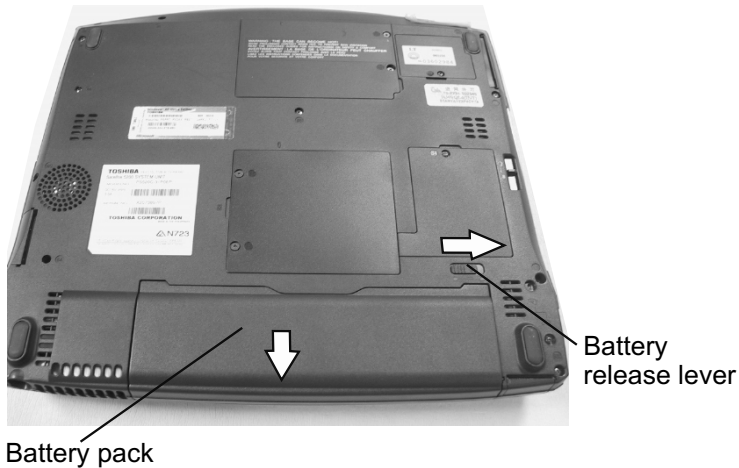
# **TOSHIBA**

**Tough Enough for Today's World**

# FIELD REPLACEABLE UNIT DOCUMENTATION

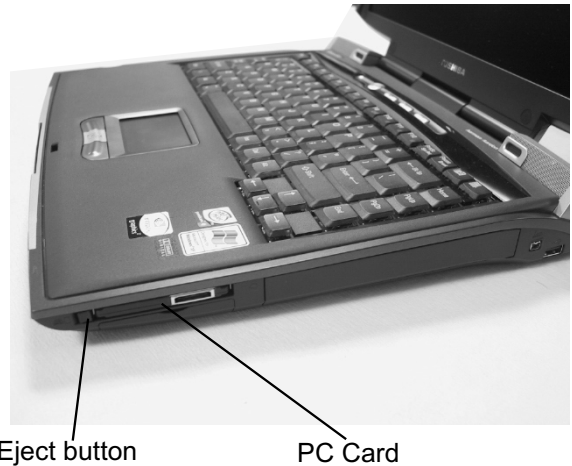
## Satellite™ 5200 Series

### BATTERY PACK REMOVAL



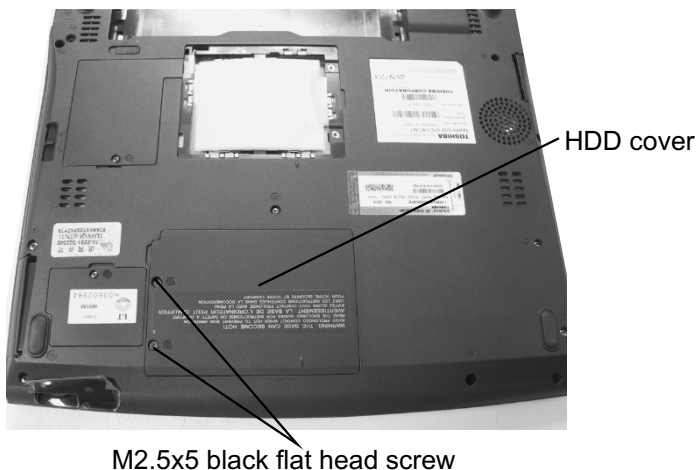
1. Turn the computer upside down as shown.
2. Slide the **battery release lever** in the direction of the arrow.
3. Lift out the **battery pack**.

### OPTIONAL PC CARD REMOVAL

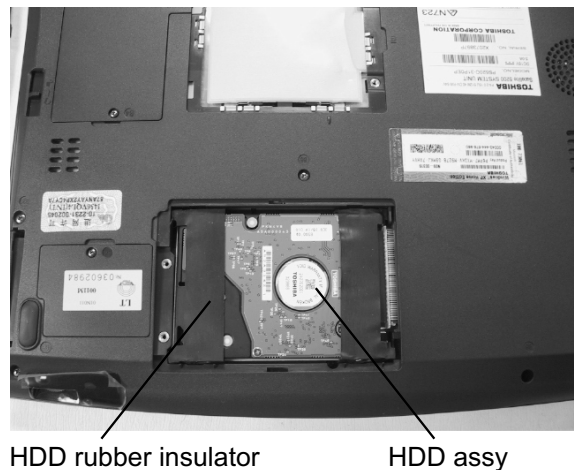


1. Press the **eject button** of the PC Card slot.
  2. Press the extended **eject button** to pop the **PC card** out slightly.
  3. Grasp the **PC Card** and pull it out
- NOTE:** Before removing any PCMCIA device, make sure it is "STOPPED" in the PC Card Manager.

### HDD REMOVAL



1. Turn the computer upside down.
2. Remove **two M2.5x5 black flat head screws** securing HDD cover and pull out the cover.

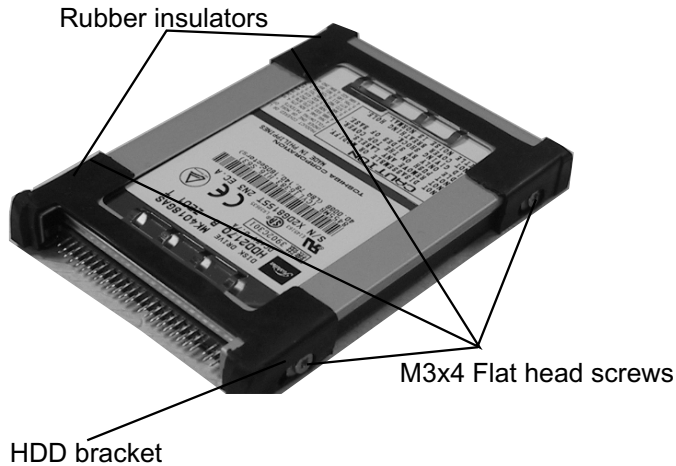


3. Slowly lift up the **HDD assembly** by the **rubber insulator** and disconnect the HDD assembly.

# FIELD REPLACEABLE UNIT DOCUMENTATION

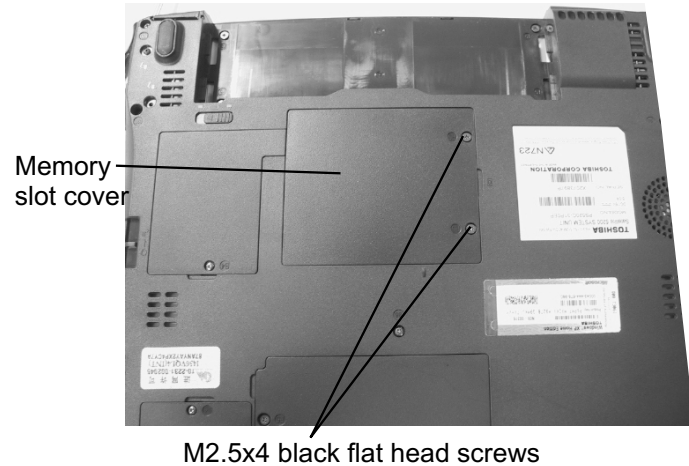
## Satellite™ 5200 Series

### HDD REMOVAL



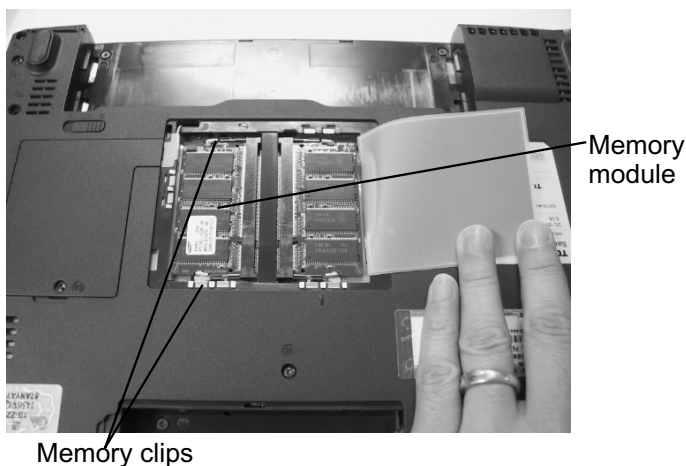
4. Separate the **two rubber insulators** from the HDD assembly.
5. Remove **four M3x4 brass flat head screws** securing the HDD bracket to the drive.

### MEMORY MODULE REMOVAL



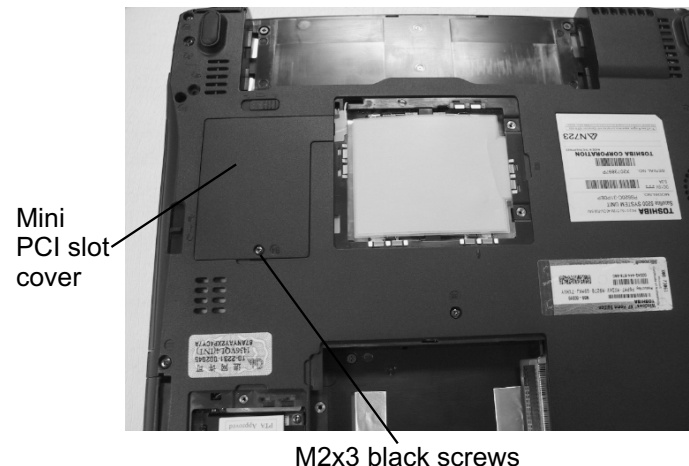
1. Turn the computer upside down.
2. Remove **two M2.5x5 black flat head screws** securing the memory cover.
3. Lift out the **cover**.

### MEMORY MODULE REMOVAL



4. Gently press out on the **memory clips** and pull the memory module out of the connector on a 30 degree angle.

### MINI PCI CARD REMOVAL

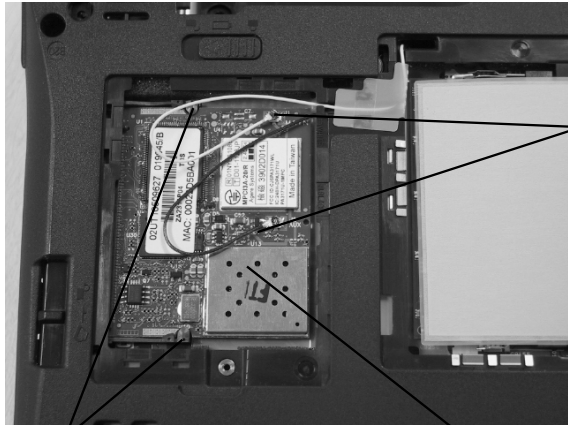


1. Turn the computer upside down.
2. Remove **one M2x4 black screw** securing the mini PCI slot cover.

# FIELD REPLACEABLE UNIT DOCUMENTATION

## Satellite™ 5200 Series

### MINI PCI CARD REMOVAL



Black/white  
mini coax

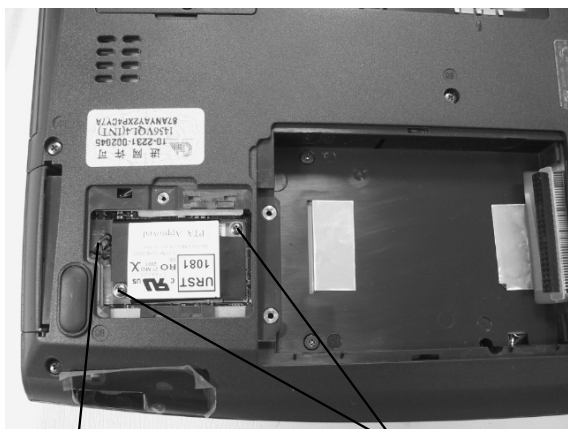
PCI clips

Wireless LAN card

3. Disconnect the **black** and **white coax cables** from the mini PCI wireless LAN card.
4. Gently press out the **Mini PCI slot clips** and pull the **Mini PCI wireless LAN card** out of the connector on a 30 degree angle.

**Note:** The black and white coax cables must be inserted in respective connectors.

### MODEM BOARD REMOVAL

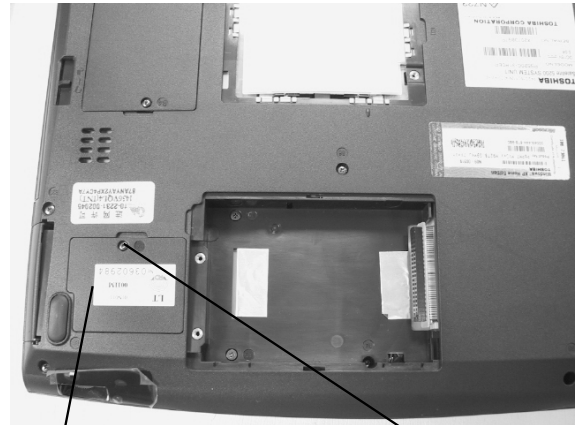


MJ harness

M2x3 black screws

3. Disconnect the **MJ harness** from JP1 on the modem board.
4. Remove **two M2x3 black screws** securing the modem board.
5. Lift up the **modem board** to disconnect it from the system board.

### MODEM BOARD REMOVAL



Modem slot cover

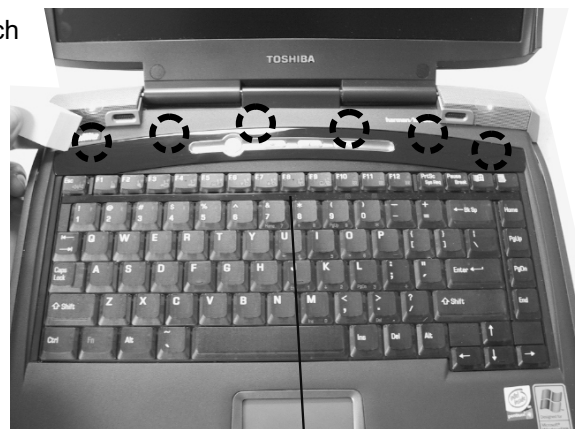
M2x3 black screw

1. Remove **one M2x3 black screw** securing the modem slot cover.
2. Lift out the **cover**.

### KEYBOARD REMOVAL



Latch



Keyboard holder

1. Open the display panel.
2. Remove the **keyboard holder** at the top of the keyboard.

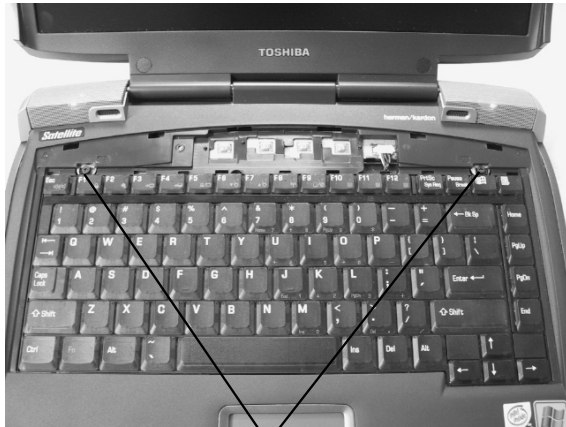
# TOSHIBA

Tough Enough for Today's World

# FIELD REPLACEABLE UNIT DOCUMENTATION

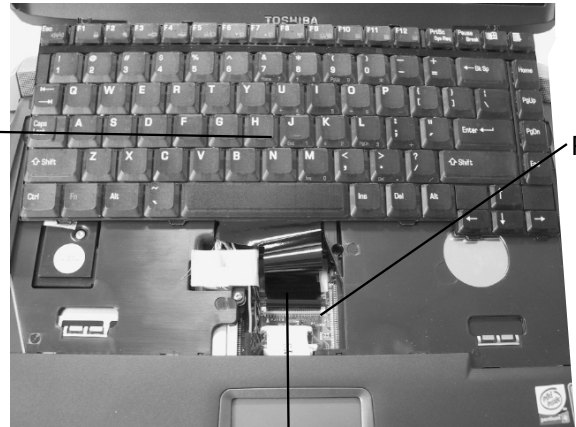
## Satellite™ 5200 Series

### KEYBOARD REMOVAL



M2.5x2.8 black flat head screws

3. Remove **two M2.5x2.8 black flat head screws** securing the keyboard.



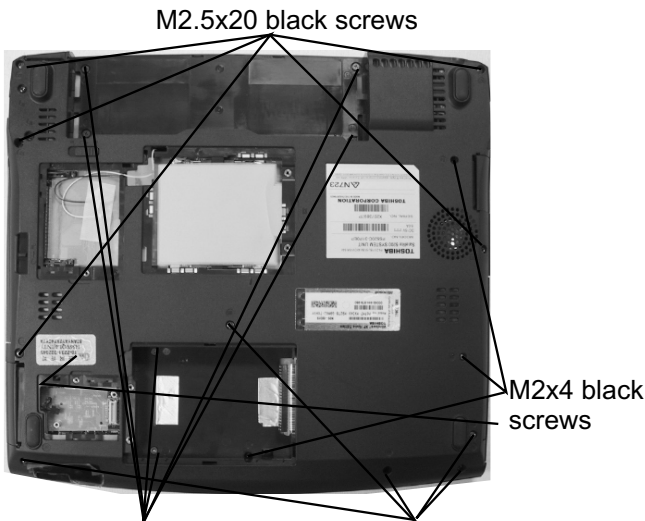
Keyboard

PJ113

Keyboard cable

4. Lift out the **keyboard** and set it as shown above.
5. Disconnect the **keyboard cable** from **PJ113** on the system board and lift out the keyboard.

### TOP COVER REMOVAL



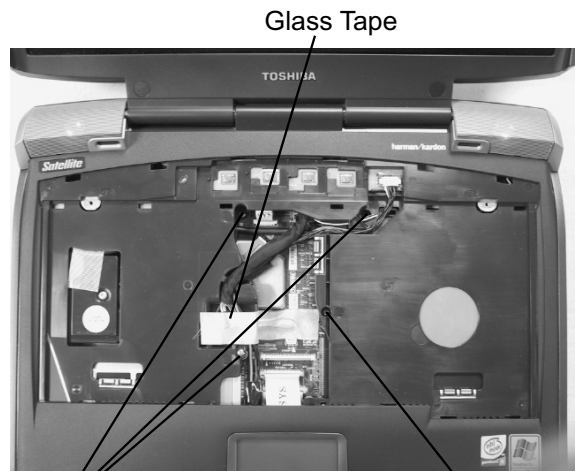
M2.5x20 black screws

M2x4 black screws

M2.5x5 black flat head screws

M2.5x6 black screws

1. Remove the following nineteen screws from the bottom cover:
  - 5 **M2.5x6 black screws**
  - 5 **M2.5x20 black screws**
  - 6 **M2.5x5 black flat head screws**
  - 3 **M2x4 black screws**



Glass Tape

M2x6 brass screws

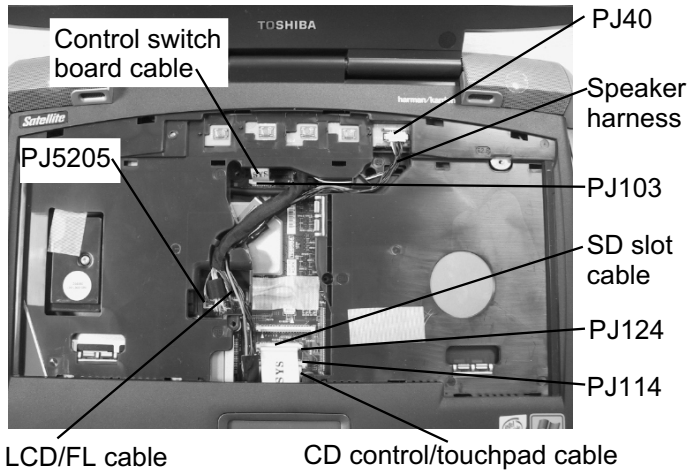
M2x14 brass screws

2. Turn the computer right side up.
3. Remove **three m2x6** and **one m2x14 brass screws** securing the top cover assembly.
4. Remove the **glass tape** securing the LCD/FL cable.

# FIELD REPLACEABLE UNIT DOCUMENTATION

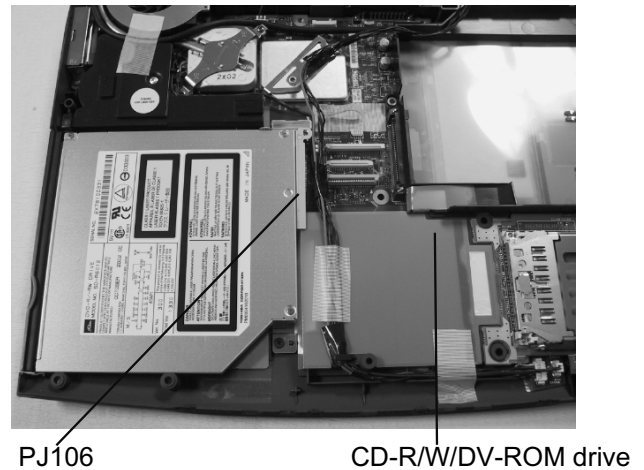
## Satellite™ 5200 Series

### TOP COVER REMOVAL



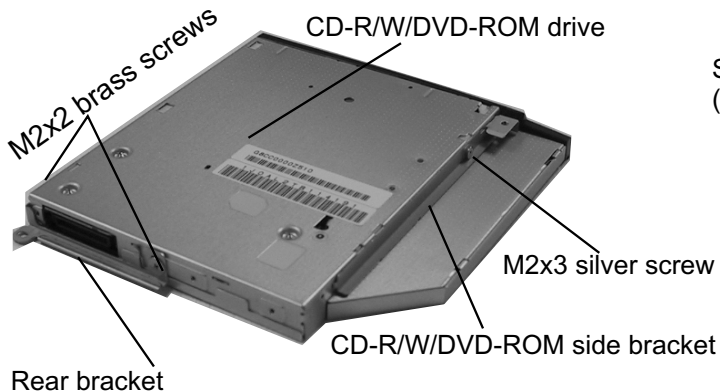
5. Disconnect the **LCD/FL cable** and **control switch board cable** from **PJ5205** and **PJ103** on the system board.
6. Disconnect the **SD slot cable** and **CD control/touchpad cable** from **PJ124** and **PJ114** on the system board.
7. Disconnect the **speaker harness** from **PJ40** on the control switch board.
8. Lift out the **top cover assembly**.

### CD-R/W/DVD-ROM DRIVE REMOVAL



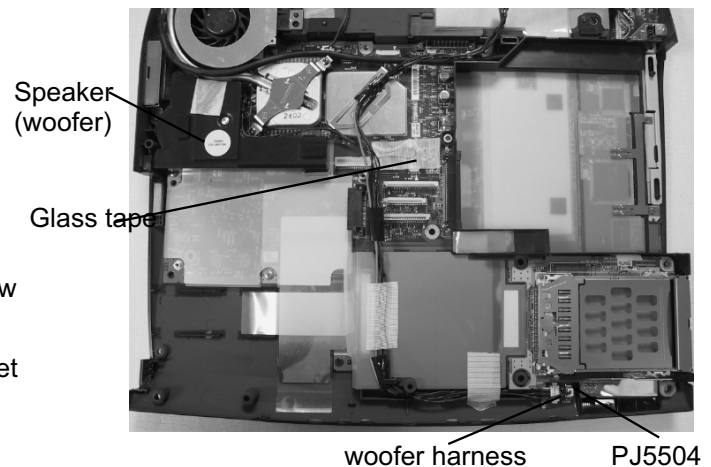
1. Slide the **CD-R/W/DVD-ROM drive** to the right to disconnect it from **PJ106** on the system board.

### CD-R/W/DVD-ROM DRIVE REMOVAL



2. Remove **one M2x3 silver screw** securing the side bracket and lift out the bracket.
3. Remove **two M2x6 brass screws** securing the CD-R/W/DVD-ROM rear bracket and separate the bracket.

### SPEAKER(WOOFER) REMOVAL

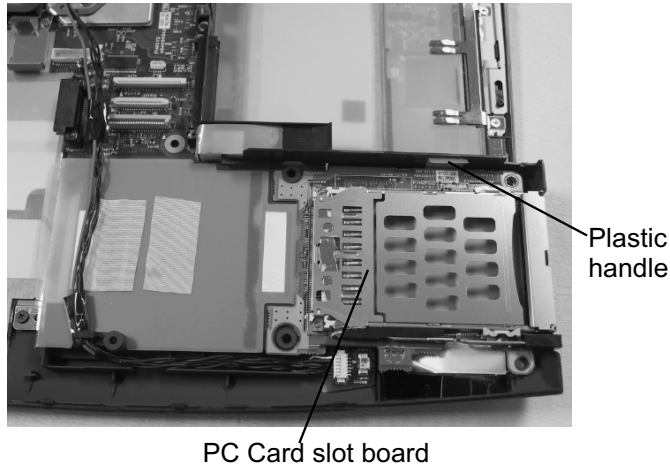


1. Peel off the **glass tape** securing the woofer harness.
2. Disconnect the **woofer harness** from **PJ5504** on the sound board.
3. Lift out the **speaker(woofer)**.

# FIELD REPLACEABLE UNIT DOCUMENTATION

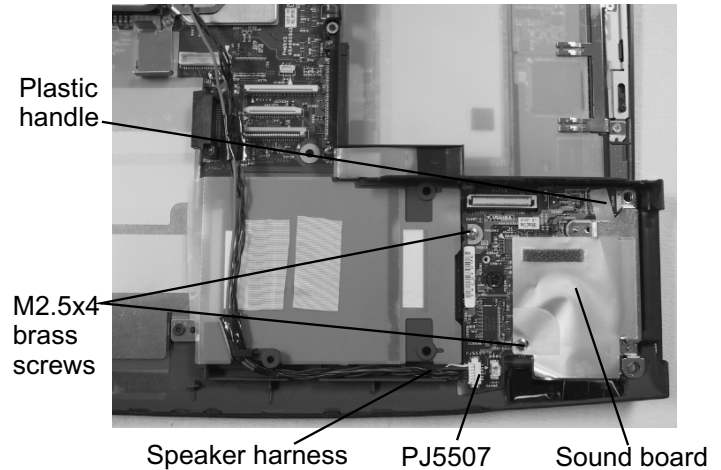
## Satellite™ 5200 Series

### PC CARD SLOT REMOVAL



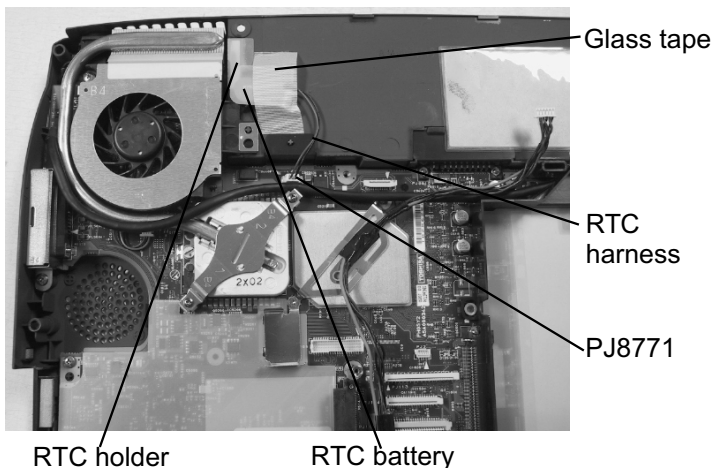
1. Grasp the plastic handle and lift up to disconnect the **PC Card slot board** from the system board.
2. Lift out the **PC Card slot board**.

### SOUND BOARD REMOVAL



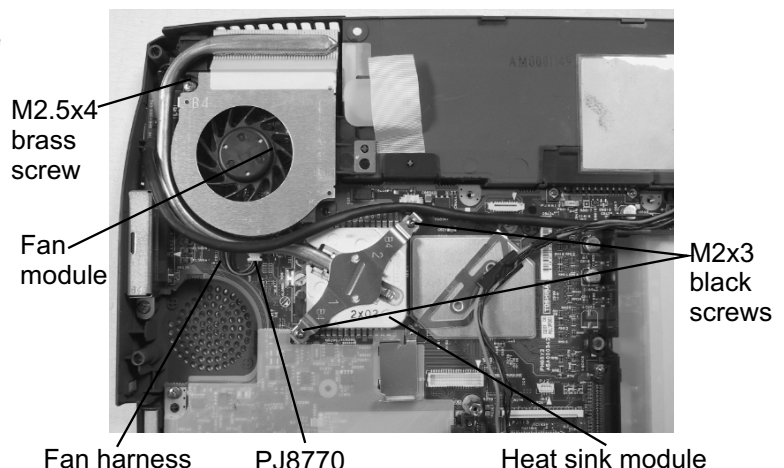
1. Disconnect the **speaker harness** from **PJ5507** on the sound card board.
2. Remove **two M2.5x4 brass screws** securing the sound board.
3. Grasp the **plastic handle** and lift up to disconnect the **sound board** from the system board

### RTC REMOVAL



1. Remove the **glass tape** securing the RTC battery to the RTC holder.
2. Disconnect the **RTC battery harness** from **PJ8771** on the system board.
3. Lift the **RTC battery** out of the holder.

### COOLING MODULE REMOVAL



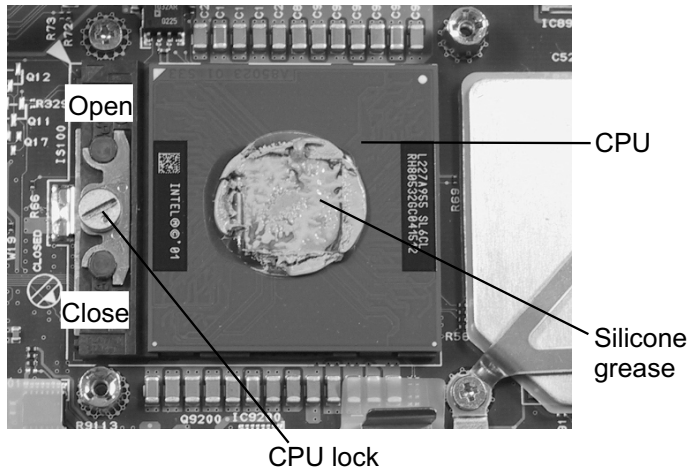
1. Remove **two M2x3 black screws** securing the heat sink assembly.
2. Lift out the **heat sink module**.
3. Disconnect the **fan harness** from **PJ8770** on the system board and remove **one M2.5x4 brass screw** securing the fan assembly.
4. Lift out the **fan module**.



# FIELD REPLACEABLE UNIT DOCUMENTATION

## Satellite™ 5200 Series

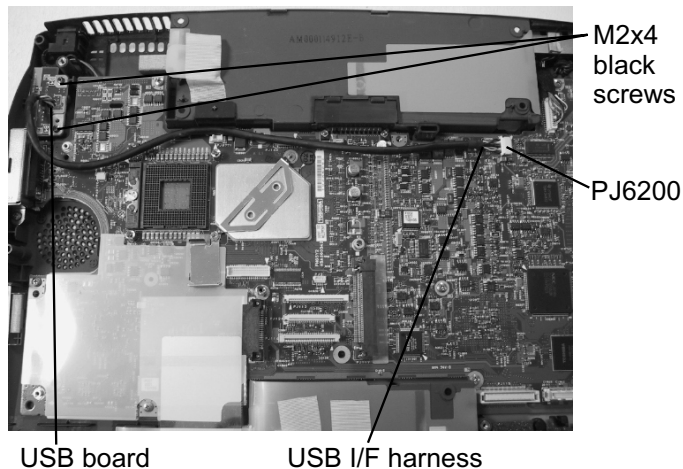
### CPU REMOVAL



1. Insert a **flat head screwdriver** in the **CPU lock** and rotate it counter-clockwise to unlock the **CPU**.
2. Lift out the **CPU**.

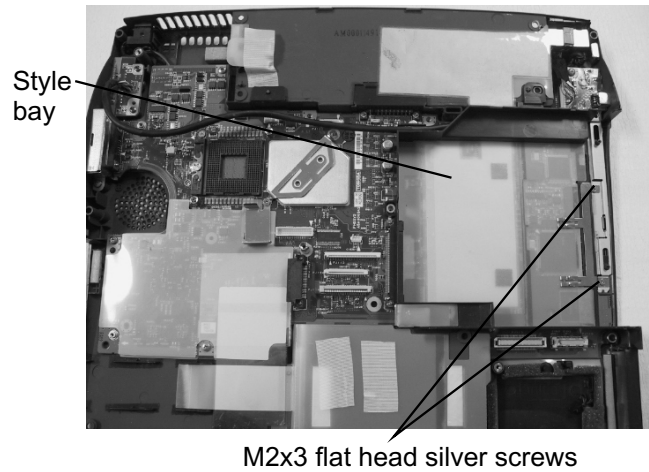
**NOTE:** When installing the CPU, make sure that a silicone grease is applied before attaching the heat sink. Please refer to FSB-200112 for the complete procedures on how to apply the silicone grease.

### USB BOARD REMOVAL



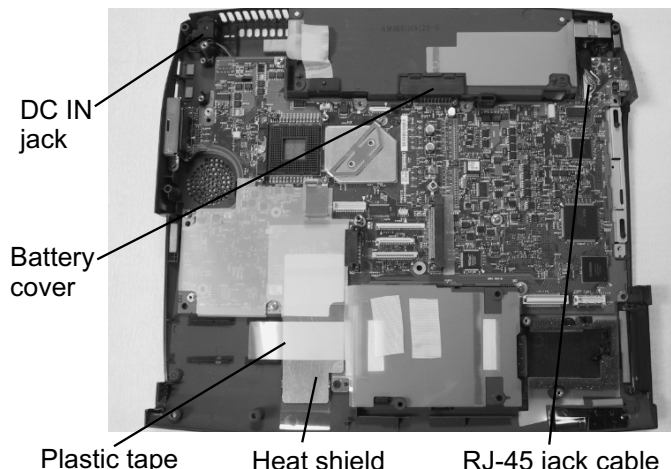
1. Disconnect the **USB I/F harness** from **PJ6200** on the system board.
2. Remove **two M2x4 black screws** securing the USB board.
3. Lift out the **USB board**.

### TOSHIBA STYLE BAY REMOVAL



1. Remove **two M2x3 silver flat head screws** securing the TOSHIBA style bay.
2. Gently lift up the **TOSHIBA style bay**.

### SYSTEM BOARD REMOVAL

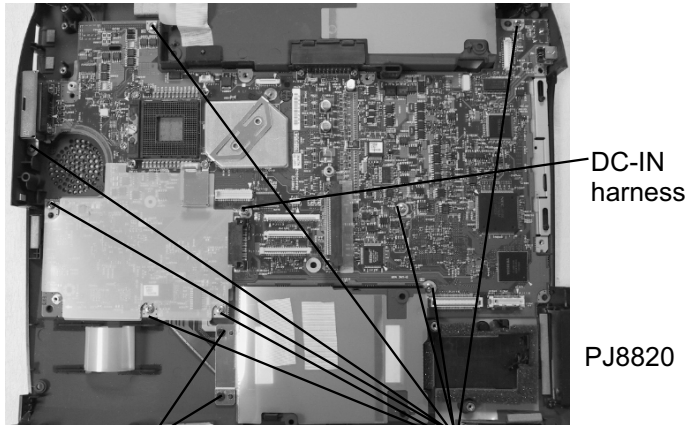


1. Peel off the **plastic tape** securing the HDD FPC and lift out the heat shield.
2. Disconnect the **RJ-45 jack cable** from **PJ108** on the system board and detach the **DC IN jack** from its slot.
4. Release two latches securing the battery cover and remove the **cover**.

# FIELD REPLACEABLE UNIT DOCUMENTATION

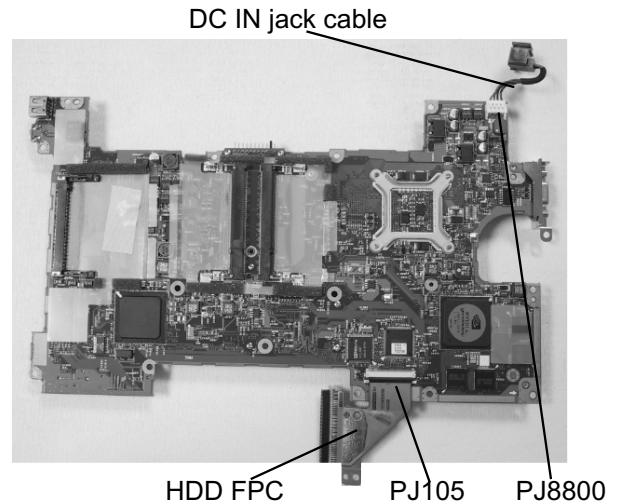
## Satellite™ 5200 Series

### SYSTEM BOARD REMOVAL



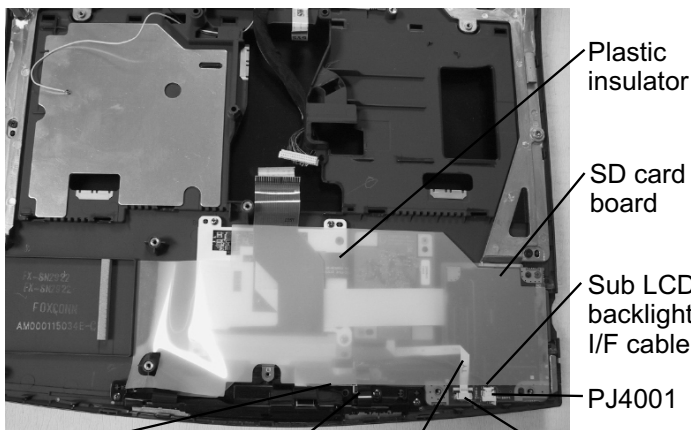
M2.5x2.8 black flat head screws    M2.5x4 brass screws

5. Remove the Following eleven screws:
  - 8 M2.5x4 brass screws
  - 2 M2.5x2.8 black flat head screws
  - 1 M2.5x14 stud screw
6. Lift out the **system board** from the left side.

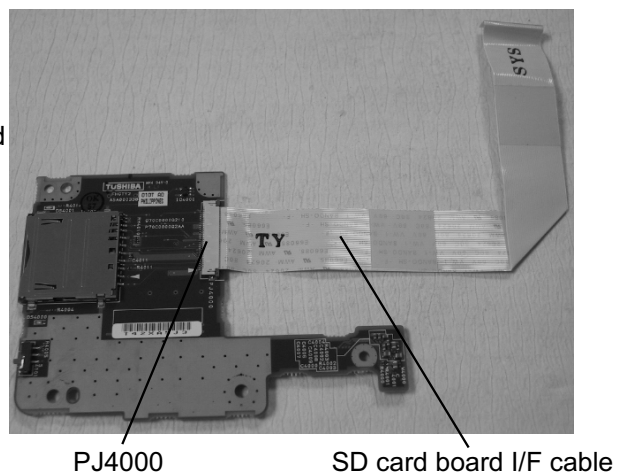


7. Turn the **system board** upside down.
8. Remove the **HDD FPC** from **PJ105** on the system board.
9. Disconnect the **DC IN jack cable** from **PJ8800** on the system board.

### SD CARD BOARD REMOVAL



- Sub LCD I/F cable    PJ4002    PAD I/F cable    PJ4003
1. Peel off the **plastic insulator** covering the SD card board.
  2. Disconnect the **sub LCD back light I/F cable** from **PJ4001**, the **sub LCD I/F cable** from **PJ4002** and the **PAD I/F cable** from **PJ4003**.
  3. Remove **two M2x4 brass screw** securing the SD card board.
  4. Lift out the **SD card board**.

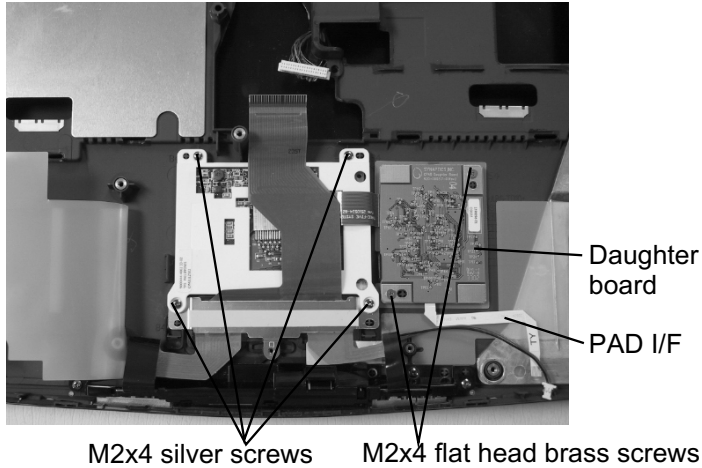


5. Disconnect the **SD Card board I/F cable** from **PJ4000** on the SD card board.

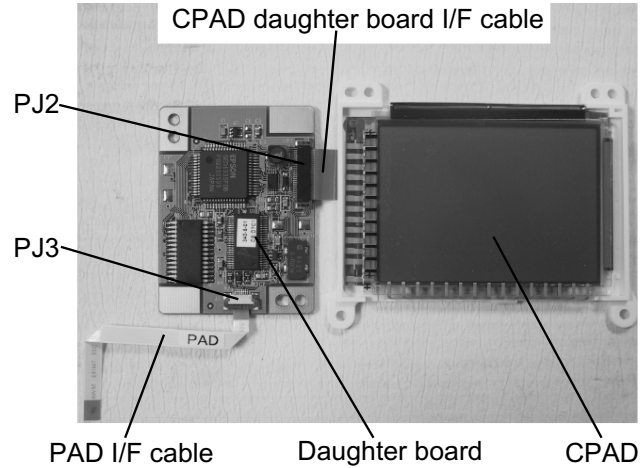
# FIELD REPLACEABLE UNIT DOCUMENTATION

## Satellite™ 5200 Series

### cPAD AND SUB LCD REMOVAL

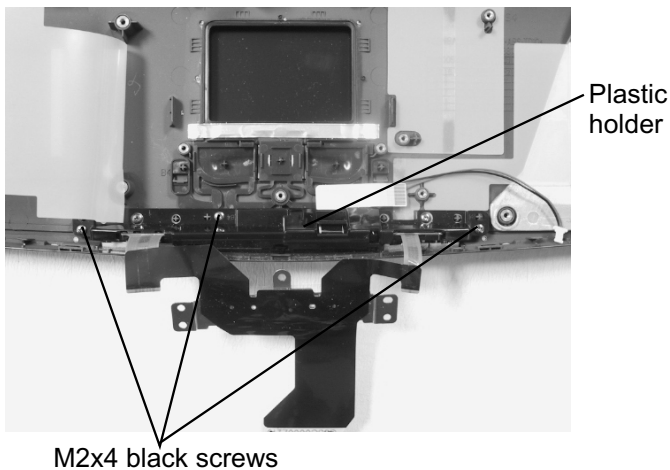


1. Remove **four M2x4 silver screws** securing the cPAD.
2. Remove **two M2x4 flat head brass screws** securing the cPAD daughter board.
3. Lift out the **cPAD** and **daughter board**.

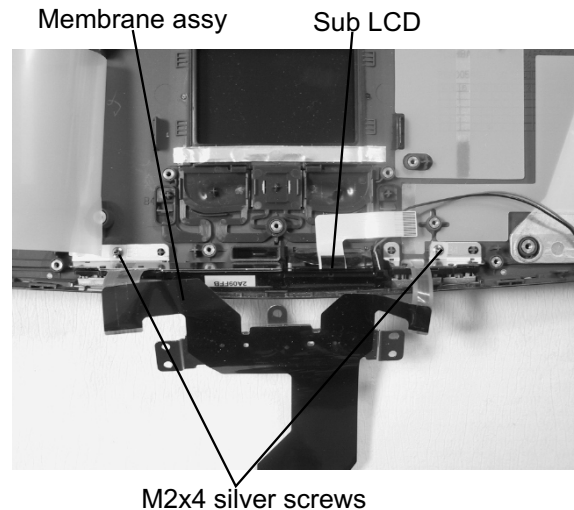


4. Disconnect the **cPAD daughter board I/F cable** from **J2** and the **PAD I/F cable** from **J3** on the cPAD daughter board.

### CD CONTROL/SUB LCD REMOVAL



5. Flip over the **membrane cable**.
6. Remove **three M2x4 black screws** securing the plastic holder.
7. Lift out the **plastic holder**.

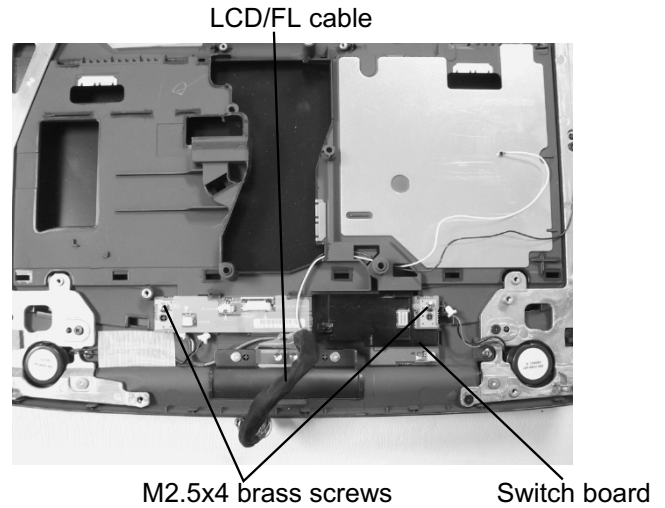
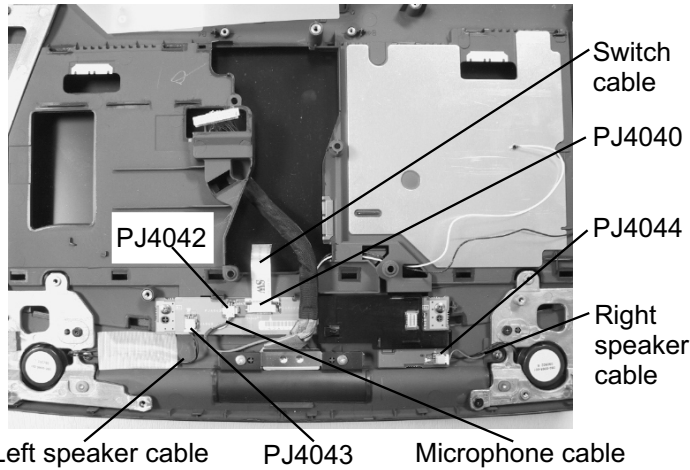


8. Remove **two M2x4 silver screws** securing the membrane assembly.
9. Lift out the **membrane assembly** and **SUB LCD**.

# FIELD REPLACEABLE UNIT DOCUMENTATION

## Satellite<sup>TM</sup> 5200 Series

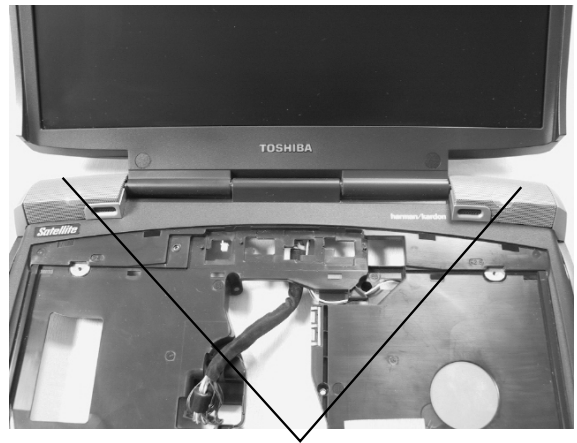
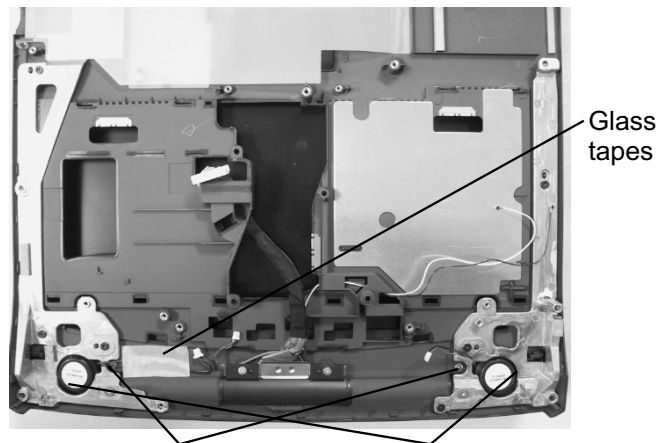
### SWITCH BOARD REMOVAL



1. Disconnect the following cables from the switch board:
  - **Switch cable** from **PJ4040**
  - **Internal microphone cable** from **PJ4042**
  - **Left /Right speaker cable** from **PJ4043** and **PJ4044**

2. Pull out the **LCD/FL cable**.
3. Remove **two M2.5x4 brass screws** securing the switch board..
4. Lift out the **switch board**.

### SPEAKERS REMOVAL



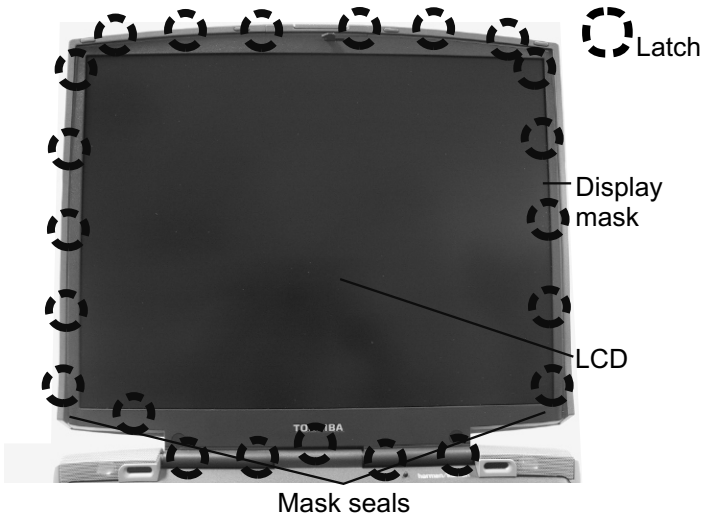
1. Peel off the **glass tape** securing the left speaker cable.
2. Remove **two M2.5x4 brass screws** securing the left and right speakers.

3. Remove the **left and right speakers**.

# FIELD REPLACEABLE UNIT DOCUMENTATION

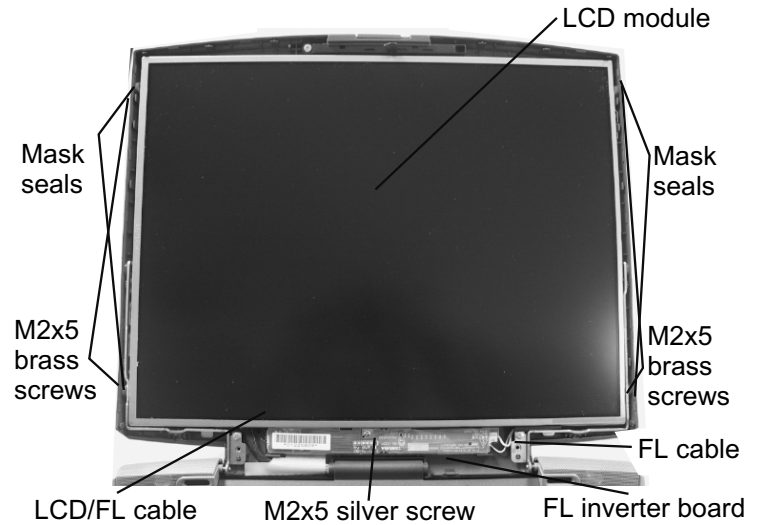
## Satellite™ 5200 Series

### 15" DISPLAY MASK REMOVAL



1. Remove **two mask seals** at the bottom corners of the display assembly using a pair of fine-tipped tweezers.
2. Remove **two M2.5x6 flat head brack screws** securing the display mask.
3. There are **22 latches** securing the **display mask**. Carefully insert your fingers between the mask and the LCD panel and pry open the latches starting from the **bottom six latches**, to the **five latches on the right and left sides**, ending with the **six toplatches**.

### FL INVERTER AND 15" LCD REMOVAL



1. Remove **one M2x5 silver screw** securing the FL inverter board.
2. Carefully lift up the **FL inverter board** and disconnect the **LCD/FL cable** from **CN1** and the **FL cable** from **CN2**.
3. Remove **four mask seals** to expose four screws securing the LCD module assembly.
4. Remove **four M2x5 silver screws** securing the LCD module.
5. Carefully rotate out the top of the **LCD module** enough to access the display cable
6. Peel off the tape securing the LCD/FL cable and disconnect the cable.

# TOSHIBA

Tough Enough for Today's World